

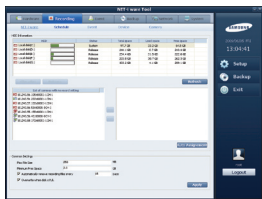
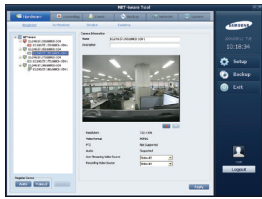
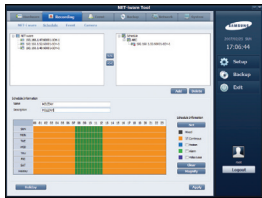
NET-i ware

SNS-SF064 / SF032 / SF016 / SF008 / SF004 / SF001
Recorder Software

- Recording software for Samsung network cameras
 - 1/4/8/16/32/64 cameras recording package are available now.
 - Live video monitoring and search/playback of recorded video by CMS software
- Supports various video and audio format recording : H.264, MPEG-4, MJPEG, G.711
- Supports various video resolution recording
 - Megapixel (1.3M/2M/3M), 4CIF, VGA, CIF
- Delivers high performance recording
 - Up to 480fps(NTSC) / 400fps(PAL) recording at 4CIF resolution
- Triplex operation performance
 - Recording, Live video transfer, Recorded video transfer
- Supports various recording options
 - Continuous recording
 - Event based recording (including Pre/Post alarm recording)
(Motion detection, I/V detection, Video loss, Alarm signal input)
 - Scheduled recording (including Holiday setup)
- Notification in case of event occurring
 - User defined alert sound output
 - E-mail to pre-assigned receiver
 - Notification to monitoring software (CMS software)
- Event Log : System, User access, Backup, Recording, Motion, Alarm, Video loss, I/V
- Back up capability
 - Manual Backup, Schedule Backup support
 - Format - REC1 (playback by NET-i viewer), SEC (self playback and watermark)
 - CD, DVD Backup
 - External storage (USB, NAS) Backup
- Multiple disk allocation and distribution for stable recording
- Multi-level user access and authority management
- IP filtering function for security access
- Multiple Language user interface support
 - English, French, Germany, Spanish, Italian, Turkish, Russian, Chinese, Japanese, Korean
- Automatic search of network cameras for quick and easy configuration
- Easy camera management (IP change, configuration, firmware upgrade)
- Automatic self upgrade (Connection to Samsung upgrade server)

Recorder Software

NET-i ware



Accessories(Provided)



USB Dongle Key

Specifications

		SNS-SF064	SNS-SF032	SNS-SF016	SNS-SF008	SNS-SF004	SNS-SF001
Device	Supported Devices	Network Camera, Encoder					
	Max. Register Devices	64	32	16	8	4	1
Record	Max. Record Channel	64	32	16	8	4	1
	Record Performance(4CIF)	480fps	480fps	480fps	240fps	120fps	30fps
	Record Performance(CIF)	1,920fps	960fps	480fps	240fps	120fps	30fps
	Video Codec	MPEG-4, MJPEG, H.264					
	Audio Codec	G.726, G.711, G.723, PCM					
	Resolution	QXGA, UXGA, SXGA, 4CIF, VGA, CIF					
	Quality	10 levels					
	Pre/Post Record Time	Pre : 1 ~ 16ch 60sec, 17 ~ 32ch 30sec, 33 ~ 64ch 15sec, Post : 1200sec					
Record Mode	Continuous, Event(Pre/Post alarm recording), Scheduled recording						
Dual Codec	Recording codec and monitoring codec are selectable by each camera.						
Component	Camera	64	32	16	8	4	1
	Sensor	Supported					
Search	Playback	4User x 4ch					
	Mode	Time, Event, Timeline					
Storage	Maximum HDDs	23HDDs					
	Configuration	Storage space assigning by each disk, Warning against lower disk space					
Back up	Supported Interface	e-SATA					
	Manual	DVD/CD, USB HDD, USB flash memory, Back up format : REC1, SEC					
User	Schedule	NAS (Network Attached Storage), USB HDD, Back up format : REC1					
	User level	User-defined function					
NIC Support	Local / Remote User	Group : 32, User : 32					
	IP filtering for Remote User	Supported					
E-mail	NIC is selectable by device connection and client connection type.						
Log	E-mail tranfer at event occurrence						
Configuration Value	System, User Access, Back up, Recording, Motion, Alarm, Video loss, I/V						
SW Status	Initialization / Export / Import						
Data Security	Device connection, Manual / Schedule recording status						
System	Login Packet Encryption						
SW Update	Supported						
Language	System auto recovery, Auto power-on record						
System Requirement (Recommended)	Automatic self upgrade (Connection to Samsung upgrade server)						
	Language						
System Requirement (Minimum)	English, French, Germany, Spanish, Italian, Turkish, Russian, Chinese, Japanese, Korean						
	CPU : Xeon E5405 QuadCore 2.0, RAM : 4GB						
System Requirement (Minimum)	Video memory : 256MB, 2HDDs(SATA II) above						
	Microsoft .NET Framework 3.5						
System Requirement (Minimum)	OS : Windows 2003 Server SP2, Windows 2008 Server						
	CPU : Intel Core2Duo 2.53GHz, RAM : 2GB above						
System Requirement (Minimum)	Video memory : 256MB, 2HDDs(SATA II) above						
	Microsoft .NET Framework 3.5						
System Requirement (Minimum)	OS : Windows XP2, Windows 2003 Server SP2, Windows Vista, Windows 2008 Server, Windows 7						



The Eco mark represents Samsung Techwin's will to create environment-friendly products, and indicates that the product satisfies the EU RoHS Directive.

Design and specifications are subject to change without notice.



SAMSUNG TECHWIN CO., LTD.
701, Sampyeong-dong, Bundang-gu, Seongnam-si, Gyeonggi-do Korea 463-400
Tel : +82-70-7147-8741~8749, 8752~8760 Fax : +82-31-8018-3745
www.samsungipolis.com www.samsungsecurity.com

SAMSUNG TECHWIN AMERICA INC.
1480 Charles Willard St, Carson, CA 90746, UNITED STATES
Tel Free : +1-877-213-1222 Fax : +1-310-632-2195
www.samsungcctvusa.com

SAMSUNG TECHWIN EUROPE LTD.
Samsung House, 1000 Hillwood Drive, Hillwood Business Park
Chertsey, Surrey, UNITED KINGDOM KT16 0PS
Tel : +44-1932-45-5300 Fax : +44-1932-45-5325

TIANJIN SAMSUNG TECHWIN OPTO-ELECTRONICS CO., LTD.
No.11 Wei 6 Street, Micro-Electronic Industrial Park
Jingang Road, Tianjin, P.R. CHINA 300385
Tel : +86-22-23887788 Fax : +86-22-23887788

■ DISTRIBUTED BY

